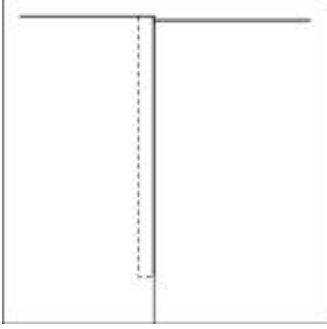


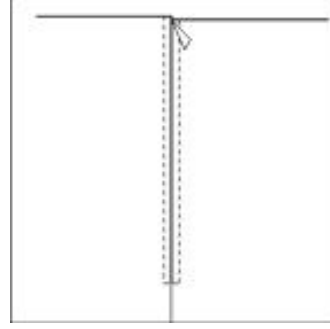
## FERMUAR TEKNİK ÇİZİMLERİ

Giysilerin açık uçlarını birleştirmede kullanılan düzeneğe "Fermuar" denir. Günümüzde fermuar, açma-kapama fonksiyonu dışında özellikle spor ve dış giyimin değişmez aksesuarı olmuştur. Fermuar dikiş tekniği seçimi yapılırken kumaş cinsi ve model özellikleri dikkate alınmalıdır.

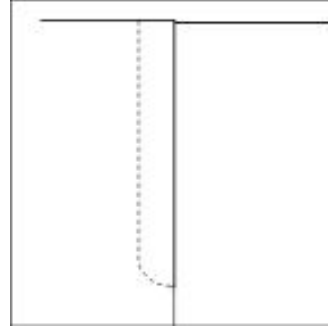
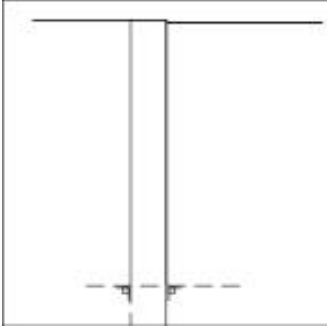
### Tek Taraflı Fermuar



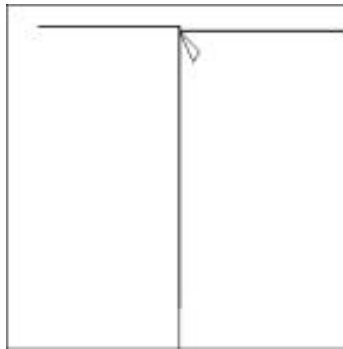
### Çift Taraflı Fermuar



### Patletli Fermuar



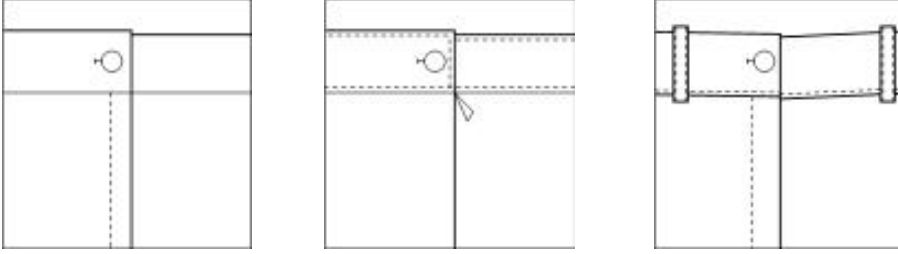
### Gizli Fermuar



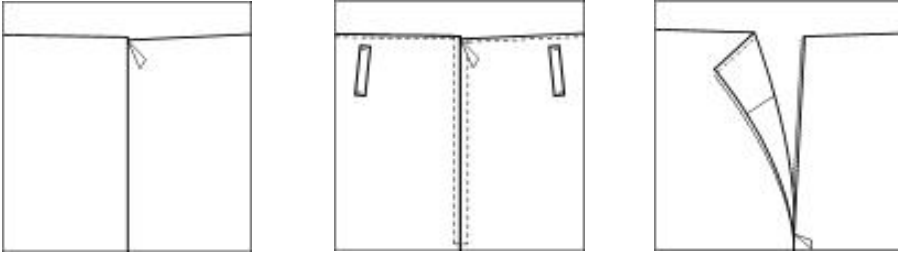
## BEL TEMİZLEME TEKNİK ÇİZİMLERİ

Giysiyi bel hattına sabitlemek amacıyla kullanılan dikiş teknikleridir. Bel temizleme tekniği seçimi yapılırken kumaş cinsi, model özellikleri ve günün moda trendleri dikkate alınmalıdır.

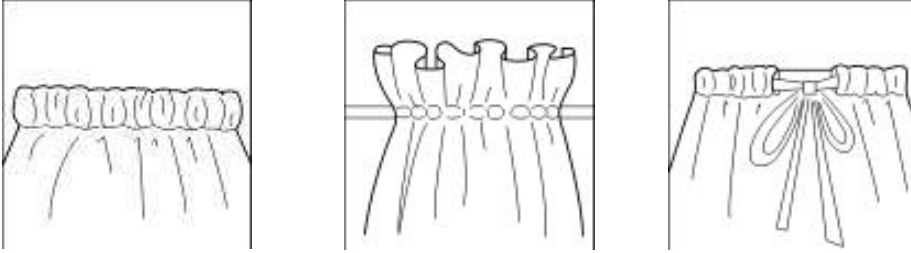
### Kemer



### Pervaz



### Lastik



## YAKA TEKNİK ÇİZİMLERİ

Boyun kısmındaki farklı açıklıklara ya da boyun kısmını saracak şekilde üst giysiye sabitleştirilmiş olan giysi parçasına "Yaka" denir.

### Yaka Çeşitleri

- **Yakasız Yakalar**
  - V yaka
  - Kayık yaka
  - U yaka
  - Bisiklet yaka
  - Kare yaka

- **Bedene Takılan Yakalar**
  - Hakim yaka
  - Bebe yaka
  - Şömiziye yaka
  - Gömlek yakası
  - Bahriye yaka

- **Bedenden çıkan yakalar**
  - Erkek yaka
  - Şal yaka

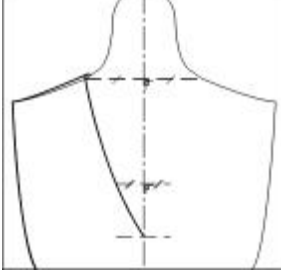
## YAKA ÇİZİMİ YAPARKEN DİKKAT EDİLECEK NOKTALAR

- Yaka çizimi yaparken orta çizginin sağına ve soluna aynı ölçüler işaretlenmelidir.
- Pistole kullanımlarında orta çizginin sağına ve soluna aynı kavis yönüyle işaretleme yapılmalıdır.
- Yaka hatları dik açı yapılarak diğer tarafa taşınmalıdır.

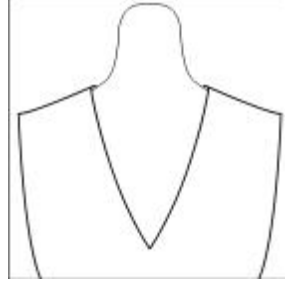
### Yakasız Yakalar

Boyun kısmındaki farklı açıklıklar ve şekiller belirlenerek çizilen yakalardır. Yaka çevresi pervaz ile temizlenir.

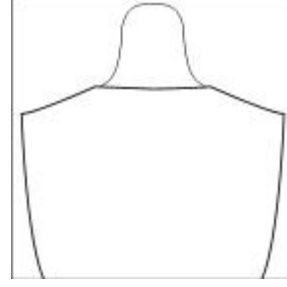
- **V Yaka**



V Yaka

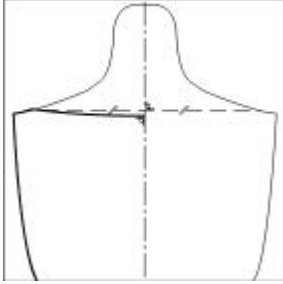


V Yaka Ön

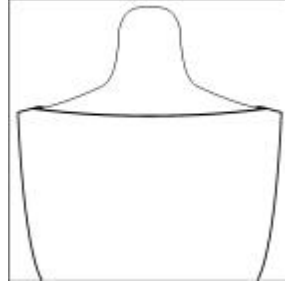


V Yaka Arka

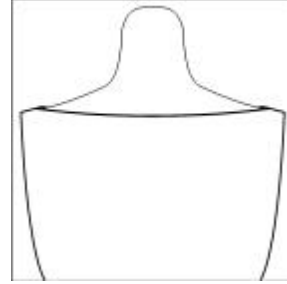
- **Kayık Yaka**



Kayık Yaka

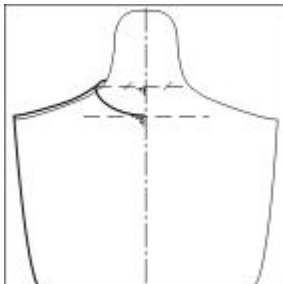


Kayık Yaka Ön

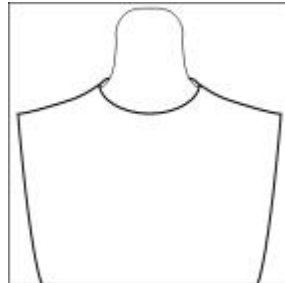


Kayık Yaka Arka

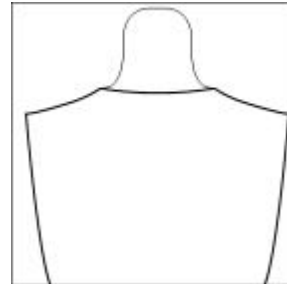
- **Bisiklet Yaka**



Bisiklet Yaka

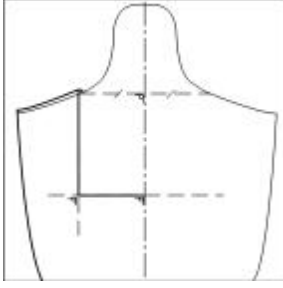


Bisiklet Yaka Ön

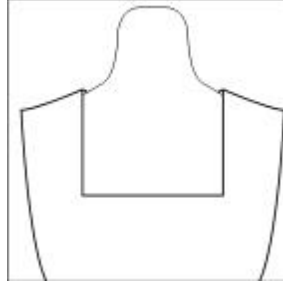


Bisiklet Yaka Arka

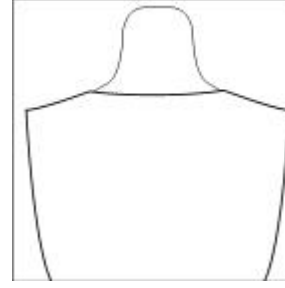
- **Kare Yaka**



Kare Yaka

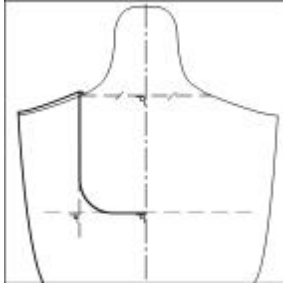


Kare Yaka Ön

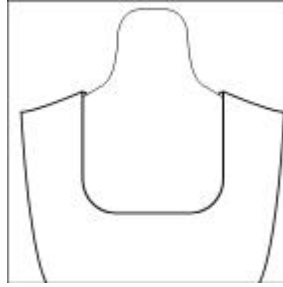


Kare Yaka Arka

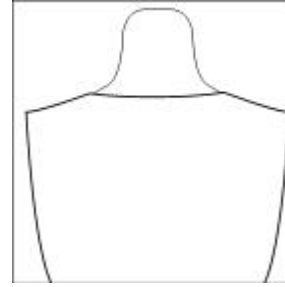
- **U Yaka**



U Yaka



U Yaka Ön

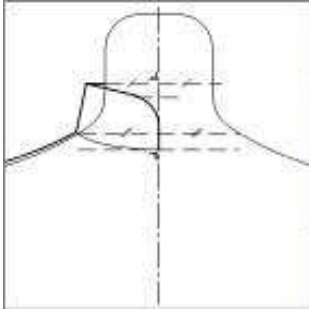


U Yaka Arka

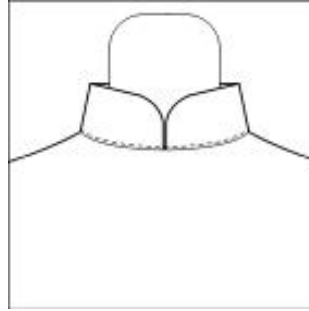
### **Bedene Takılan Yakalar**

Boyun çevresi ölçüsü alındıktan sonra ayrı olarak kalıbı çıkarılan yakalardır. Bu yakalar boyun çevresini sararak dik bir görüntü oluşturur.

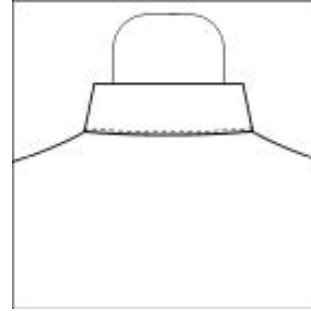
- **Hakim Yaka**



Hakim Yaka

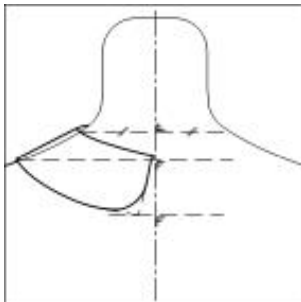


Hakim Yaka Ön

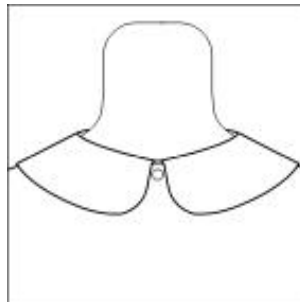


Hakim Yaka Arka

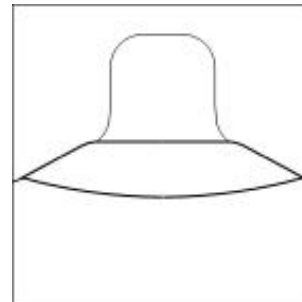
- **Bebe Yaka**



Bebe Yaka

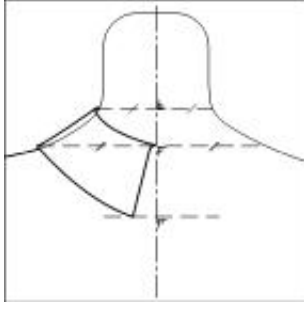


Bebe Yaka Ön

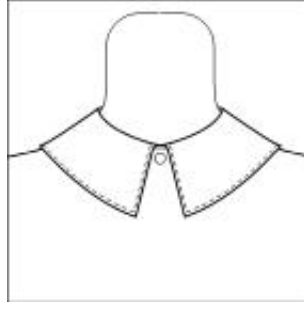


Bebe Yaka Arka

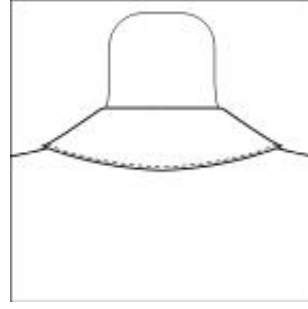
- **Şömiziye Yaka**



Şömiziye Yaka

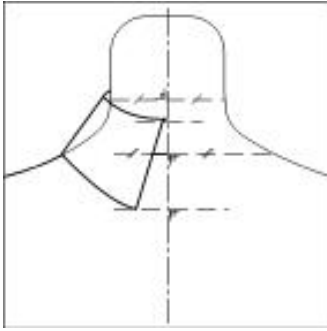


Şömiziye Yaka Ön

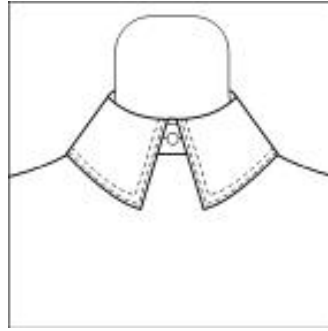


Şömiziye Yaka Arka

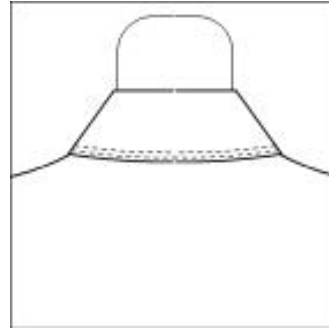
- **Gömlek Yaka**



Gömlek Yaka

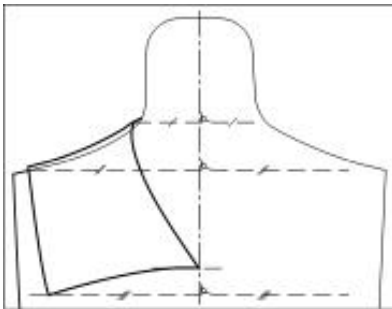


Gömlek Yaka Ön

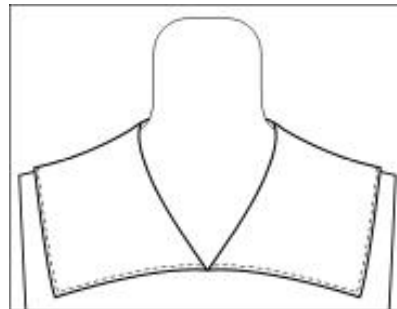


Gömlek Yaka Arka

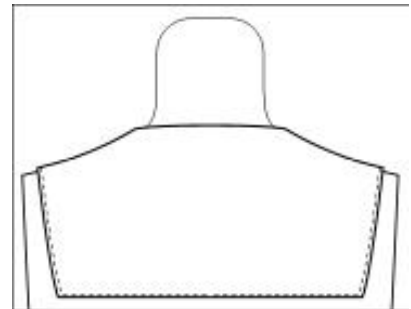
- **Bahriye Yaka**



Bahriye Yaka



Bahriye Yaka Ön

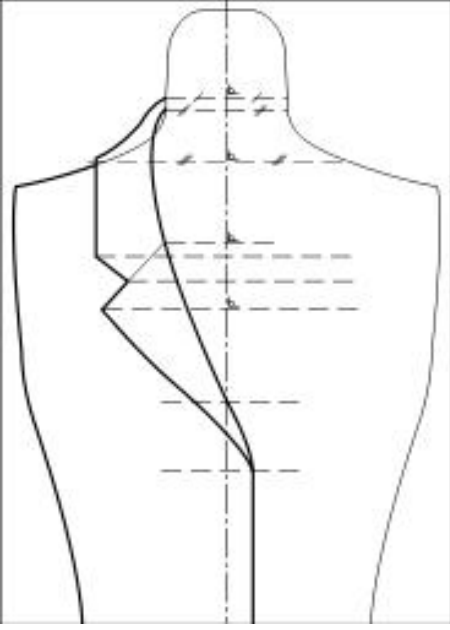


Bahriye Yaka Arka

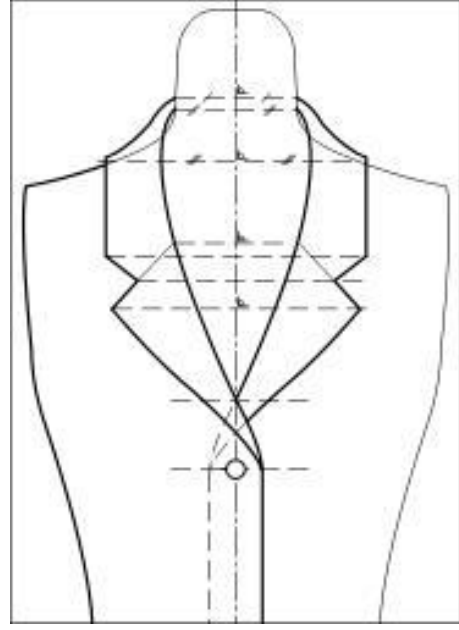
### **Bedenden Çıkan Yakalar**

Bedene bağlı olarak kalıbı çıkarılan yakalardır. Bu yakalar ensede boyun çevresini sarar, önde ise yatık bir görüntü oluşturur.

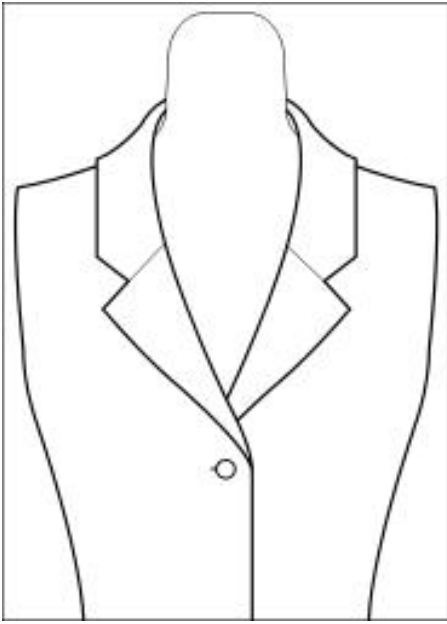
- Erkek Yaka



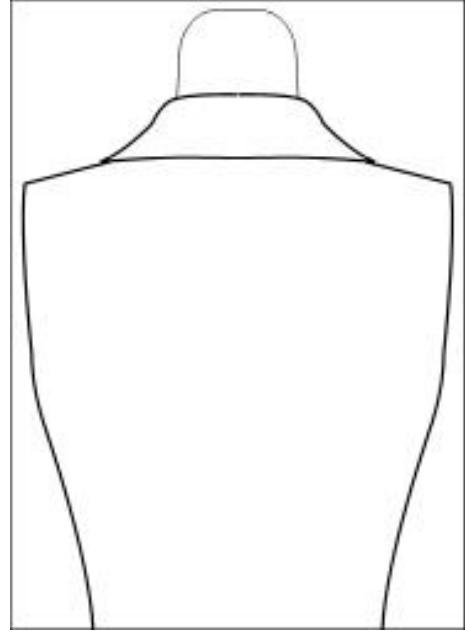
Erkek Yaka



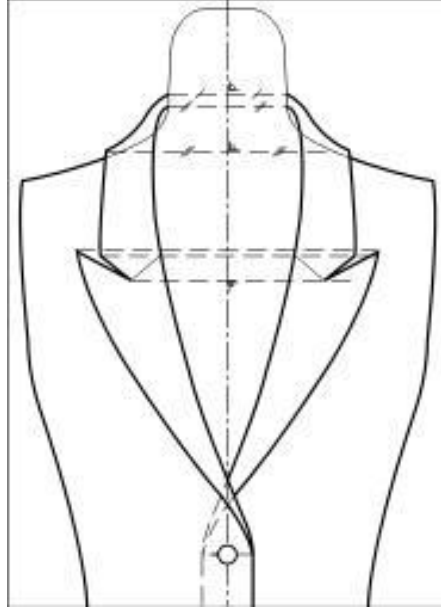
Erkek Yaka



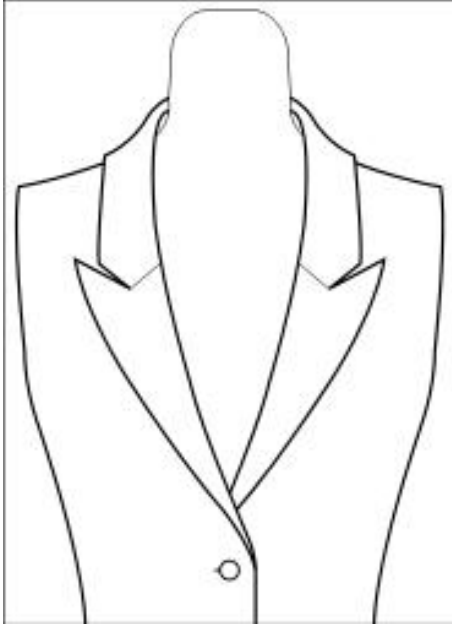
Erkek Yaka Ön



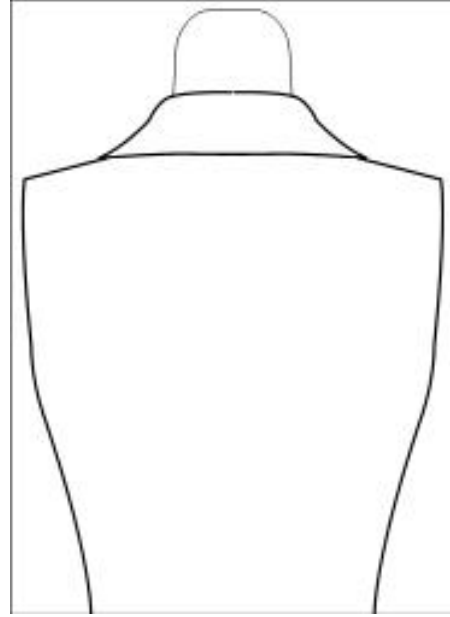
Erkek Yaka Arka



Erkek Yaka

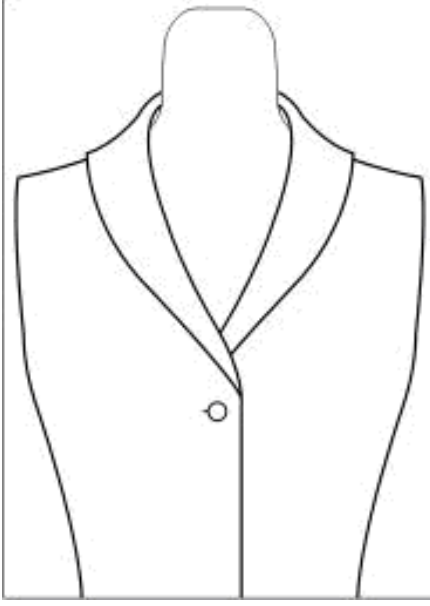


Erkek Yaka Ön

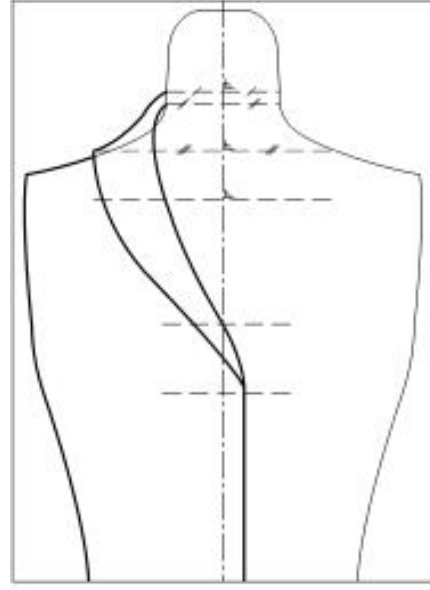


Erkek Yaka Arka

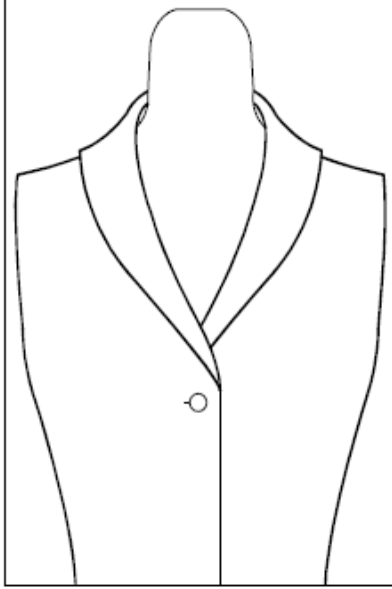
- Şal Yaka



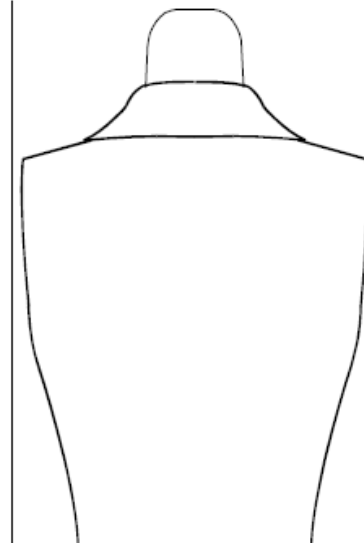
Şal Yaka



Şal Yaka



Şal Yaka Ön



Şal Yaka Arka